




MEMBER OF THE PFEIFER GROUP

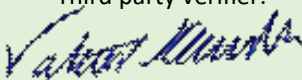
# Environmental product declaration

in accordance with ISO 14025 and EN 15804

Impregnated timber from Pölkky Oy



<b>Program operator, publisher:</b>	Rakennustietosäätiö RTS, The Building Information Foundation RTS Malminkatu 16 A, 00100 Helsinki. <a href="http://cer.rts.fi">http://cer.rts.fi</a>
<b>Owner of the declaration:</b>	Pölkky Oy
<b>Name of the product:</b>	Impregnated timber from Pölkky Oy
<b>Declaration number:</b>	
<b>Registration number:</b>	
<b>ECO Platform reference number:</b>	
<b>Issue date:</b>	
<b>Valid to:</b>	
<b>Scope of the declaration</b>	<p>This environmental product declaration covers the environmental impacts of impregnated timber produced at Pölkky Oy's production facility in Oulu. The collected data represents the year 2022.</p> <p>The declaration has been prepared in accordance with SFS-EN 15804:2012 + A2:2019, EN 16485:2014 wood PCR and ISO 14025 standards and the additional requirements stated in the RTS PCR (English version, 26.08.2020). EPD of construction products may not be comparable if they do not comply with EN15804 and seen in a building context.</p> <p>This declaration covers the life cycle stages from cradle to gate, end of life stage and benefits and loads beyond the system boundary.</p>
<b>Logo</b>	<b>Signatures</b>
	

<b>Verified according to the requirements of EN 15804:2019 (Product group rules)</b>	
<b>Independent verification of the declaration and data, according to the ISO 14025:2010 is</b>	
<input type="checkbox"/> Internal	<input checked="" type="checkbox"/> External
Third party verifier:  16.06.2025 Valtteri Kainila, Ramboll Finland Oy	

## Table of content

1	General information.....	4
1.1	Owner of the declaration .....	4
1.2	Description of the organisation .....	4
1.3	Product name and code .....	4
1.4	Production sites.....	4
1.5	Additional information .....	4
1.6	Product category rules and scope of life cycle assessment.....	4
1.7	Author of the life cycle assessment and environmental report.....	5
1.8	Verification .....	5
1.9	Declaration issue date and validity .....	5
2	Product information.....	5
2.1	Description of the product and its use .....	5
2.2	Results of environmental information reported per kilogram.....	6
2.3	Product standard.....	7
2.4	Physical properties .....	7
2.5	The main raw materials of the products.....	7
2.6	Substances under European Chemicals Agency's REACH SVHC restrictions .....	7
3	Scope of life cycle assessment .....	7
3.1	Declared unit .....	7
3.2	System boundaries .....	8
3.3	Life cycle stages .....	8
3.4	System boundary exclusions.....	9
3.5	Allocation.....	10
4	Indicators describing environmental impacts and use of natural resources.....	10
4.1	Core environmental impacts per declared unit .....	10
4.2	Additional environmental impacts per declared unit .....	11
4.3	Indicators describing the use of natural resources.....	12
5	Other environmental indicators .....	12
5.1	Biogenic carbon content per declared unit .....	12
5.2	Amount of wastes.....	13
5.3	Other environmental indicators .....	13
6	Scenarios and additional technical information .....	13
6.1	Energy in manufacturing phase .....	13
6.2	Transportations to the construction site A4.....	14
6.3	Additional technical information in the end-of-life phase .....	14
7	References .....	15
	Attachments .....	15



## 1 General information

### 1.1 Owner of the declaration

Pölkky Oy  
Kemijärventie 73  
93600 Kuusamo

Tel.: +358 20 764 0200  
Email: office@polkky.fi

### 1.2 Description of the organisation

Pölkky Oy is the largest private wood processing company in Northern Finland. Pölkky Oy owns the entire process from wood procurement to sawmill operations and the manufacturing of processed products. Our main products include high quality spruce and pine sawn timber, planed spruce and pine S4S (Surfaced four sides), profile boards, ceilings, and floorings, impregnated S4S and decking, glulam and components for wooden frame houses. Our range of timber products has been developed to correspond to the special needs of the end users.

In addition to our timber products, Pölkky Oy also offers a variety of by-products such as wood chips and sawdust. The by-products can be used for example in the pulp industry, heat production, gardening or animal shelters. Utilizing the by-products underlines our principle that nothing goes to waste from the raw materials.

Pölkky Oy is part of Pfeifer Group which is one of the leading timber processing companies in Central Europe.

### 1.3 Product name and code

Impregnated timber from Pölkky Oy

### 1.4 Production sites

Pölkky Oy Oulu, Moreenitie 17, 90620 Oulu

The geographic representative country is Finland.

### 1.5 Additional information

Additional information from:  
Mikael Kostamo, Pölkky Oy  
Sustainable Development Manager  
Email: Mikael.kostamo@polkky.fi

### 1.6 Product category rules and scope of life cycle assessment

The declaration has been prepared in accordance with SFS-EN 15804:2012 + A2:2019, EN 16485:2014 wood PCR and ISO 14025 standards and the additional requirements stated in the RTS PCR (English version, 26.08.2020).

This EPD covers life cycle stages for impregnated timber from cradle to gate with options, modules C1-C4, and module D.

### 1.7 Author of the life cycle assessment and environmental report

Pölkky Oy, Kemijärventie 73, 93600 Kuusamo. <https://polkky.com/fi/>  
Telephone.: +358 20 764 0200. Email: [office@polkky.fi](mailto:office@polkky.fi)

Author: M.Sc. Mikael Kostamo

### 1.8 Verification

The declaration has been prepared in accordance with SFS-EN 15804:2012 + A2:2019, EN 16485:2014 wood PCR and ISO 14025 standards and the additional requirements stated in the RTS PCR (English version, 26.08.2020).

This declaration was verified by third party verifier according to abovementioned standards and PCR rules by: Valtteri Kainila, Ramboll Finland Oy

Verification date: 16.06.2025

Verification is valid until: 16.06.2030

### 1.9 Declaration issue date and validity

Declaration issue date xx.xx.2025. The declaration is valid 5 years.

## 2 Product information

### 2.1 Description of the product and its use

The declaration is made for average impregnated timber manufactured at Pölkky Oy's production site in Oulu. Impregnated timber is made of responsibly sourced pine (*Pinus sylvestris*) and spruce (*Picea abies*). Log procurement and the manufacturing processes at Pölkky Oy are FSC® and PEFC certified.<sup>1</sup>

Dimensions and lengths of the products varies on a wide range as well as the end use of the product. Impregnated wood is commonly used in outdoor applications, such as decking, fences, playgrounds, and landscaping structures, where durability and resistance to weather, moisture, and pests are essential.

Moisture content for impregnated timber after the process can be 50–60 %, but the water evaporates in time until the wood reaches equilibrium. The density of treated wood in the end is one to two percent higher compared to untreated wood. Impregnated products are mainly class NTR A or NTR AB. Also, UC2 products are produced for UK market.

Impregnated timber is mainly made from the planed timber produced at Pölkky Oy's production sites. Also, a small portion of sawn timber is impregnated annually. Sawn timber is procured from Pölkky Oy's production facilities as well. Occasionally, a batch of raw material may come from a subcontractor. The treatment is carried out through pressure impregnation in a closed process, where all excess preservatives are collected and reused in the next batch.

Planed timber procured from a subcontractor is modelled by the Finnish Sawmill association EPD for the average planed timber in Finland (EPD of Finnish Sawn and planed timber 10.06.2021).

<sup>1</sup> FSC Trademark licence code: FSC-C163097

Planed timber and sawn timber produced at Pölkky Oy's own factories used in the process is modelled by Pölkky Oy's EPD's for sawn and planed timber.

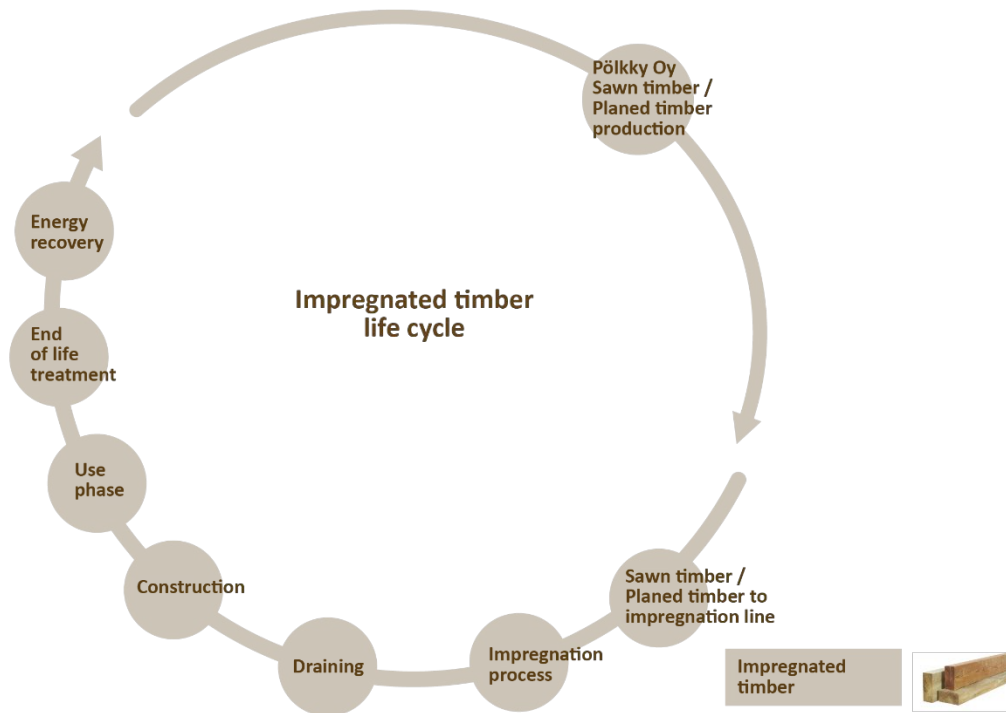


Figure 1. Life cycle of impregnated timber.

## 2.2 Results of environmental information reported per kilogram

Table 1. Impregnated timber key information per kilogram

Indicators	Unit	A1-A3	A4	A5	C1	C2	C3	C4	D
Climate change - total	kg CO <sub>2</sub> eq.	-1,05E+00	1,68E-02	3,02E-04	3,02E-04	3,28E-02	1,51E+00	2,23E-04	-5,98E-01
Abiotic depletion, minerals & metals	kg Sb eq.	3,09E-08	2,21E-10	1,96E-12	1,96E-12	2,42E-10	1,74E-08	2,38E-12	-7,92E-11
Abiotic depletion of fossil resources	MJ, net calorific value	2,16E+00	2,42E-01	3,47E-03	3,47E-03	5,17E-01	1,51E-01	2,65E-03	-1,02E+01
Water use	m <sup>3</sup> world eq. Deprived	9,59E-03	7,94E-05	1,38E-05	1,38E-05	1,37E-04	-4,03E-04	5,53E-06	-1,81E-02
Biogenic carbon content in product	kg C/kg	4,13E-01	0,00E+00	0,00E+00	0,00E+00	0,00E+00	0,00E+00	0,00E+00	0,00E+00
Use of secondary material	kg/kg	0,00E+00	0,00E+00	0,00E+00	0,00E+00	0,00E+00	0,00E+00	0,00E+00	0,00E+00

## 2.3 Product standard

Pölkky Oy's impregnated timber is produced according to the NTR documentation. Impregnation class (EN 335) NTR AB (UC3) and NTR A (UC4) Penetration class (EN 351) NP5.

## 2.4 Physical properties

Moisture content for impregnated timber right after the process can be 50–60 %, but the water evaporates in time until the wood reaches equilibrium. The density of treated wood in the end is 1–2 % higher compared to untreated wood. The average density of impregnated timber in the modules A4-A5, C and D is 490 kg/m<sup>3</sup> in a moisture content of 20 %.

## 2.5 The main raw materials of the products

The raw materials of the products are 25 % spruce (*Picea abies*) and 75 % pine (*Pinus sylvestris*) and copper-based impregnation chemicals. Other chemicals represent mold inhibitor chemical and toning chemical. The amount and mixture of chemicals varies a bit depending on the product. Product main composition is shown in the following table.

Table 2. The product main composition.

Product structure	Material	Quantity p%*	Origin of the materials
Metals	-	0	-
Stone-based materials (minerals)	-	0	-
Bio-based materials	Wood	99	Finland
Fossil materials	Impregnation chemicals	~ 1 %	Austria / Finland
Fossil materials	Other chemicals	~ 0,2 %	Finland

The finished product tied up with a plastic band. For impregnated products, there is no need for plastic wrapping. The weight of the packaging material relative to the product is less than 0.1 %.

## 2.6 Substances under European Chemicals Agency's REACH SVHC restrictions

The products do not include substances from ECHA's Candidate List of Substances of Very High Concern.

# 3 Scope of life cycle assessment

## 3.1 Declared unit

The unit for which the calculations are made is 1 m<sup>3</sup> of impregnated timber. The density used in this EPD is 490 kg/m<sup>3</sup>.

The results for the impregnated timber represent the of the outcomes from Pölkky Oy's Oulu's production facility when producing 1 m<sup>3</sup> of impregnated timber. The impregnated timber is only produced at one production facility. The calculation basis used is one full year, the year 2022.

### 3.2 System boundaries

This EPD covers life cycle stages for impregnated timber from cradle to gate with options, modules C1-C4, and module D. The product phase, transportation to the building site and installation A1-A5 are included as well as the deconstruction, transportation to waste processing and the waste processing C1-C4. Also, the module D, information beyond construction works life cycle, is in the scope. The system borders are shown in the figure 2.

The modules marked with green signs are included in the EPD and the modules marked with red signs are excluded.

A1-A3 Product Stage			A4-A5 Construction Stage		B1-B7 Use Stage							C1-C4 End of Life Stage				D Other supplementary information
A1	A2	A3	A4	A5	B1	B2	B3	B4	B5	B6	B7	C1	C2	C3	C4	
Raw Material Supply	Transport	Manufacturing	Transport	Construction Installation	Use	Maintenance	Repair	Replacement	Refurbishment	Operational Energy	Operational Water	Deconstruction/Demolition	Transport	Waste Processing	Disposal	Future Reuse, Recycling or Energy Recovery Potentials

Figure 2. The modules included in this EPD. The modules marked with green signs are included in the EPD and the modules marked with red signs are excluded.

### 3.3 Life cycle stages

Data for A1-A3 have been collected from Oulu's production site. Module A1-A3 includes all the raw materials used, also forest management activities, transports to production site, energy production (electricity, heat and fuels), including primary production and processing of raw materials and fuels. Production of impregnated timber consists of first sawing the raw-material and then usually planing the sawn timber before the raw material is impregnated. More than 90 % of the impregnated timber are planed timber. At the impregnation plant, the process consists only of loading the batch into the impregnation chamber, unloading it, and draining the impregnated load. Main raw material is wood harvested from sustainable forests. Pölkky Oy's whole chain of custody is FSC and PEFC certified. Also waste treatment and transportations from the production facility are included.

Large share of the impregnated timber is sold to domestic markets. One of the biggest clients is located near the Oulu area, thus the transportation to customer, module A4, for impregnated timber, includes transportation from the Oulu's production site to a customer within a 50 km distance with full trailers for the declared unit 1 m<sup>3</sup>. Transportation in the module C was modelled to respond how treated wood waste is commonly managed in Finland.

In the modules A5 construction and C1 demolition the work is done by a drill driver. It is estimated that there is no production loss in the installation phase. The potential amount of production loss from the installation of impregnated timber cannot be determined by the manufacturer, as it is highly dependent on the specific application and installation method. Impregnated timber products have a wide range of uses and cutting losses or off-cuts vary significantly depending on the end use. The model assumes that the 1 m<sup>3</sup> of installed product used as a functional unit can be directly installed without the need to modify them or discard any individual planks for example due to quality issue.



In modules C and D, 100 % of the product is burned in a hazardous waste incineration plant with an energy recovery system. In the module D the impregnated timber is incinerated with energy recovery, and the resulting heat substitutes average district heating production in Finland. The biogenic carbon content coming to the system in A1 is released in C3.

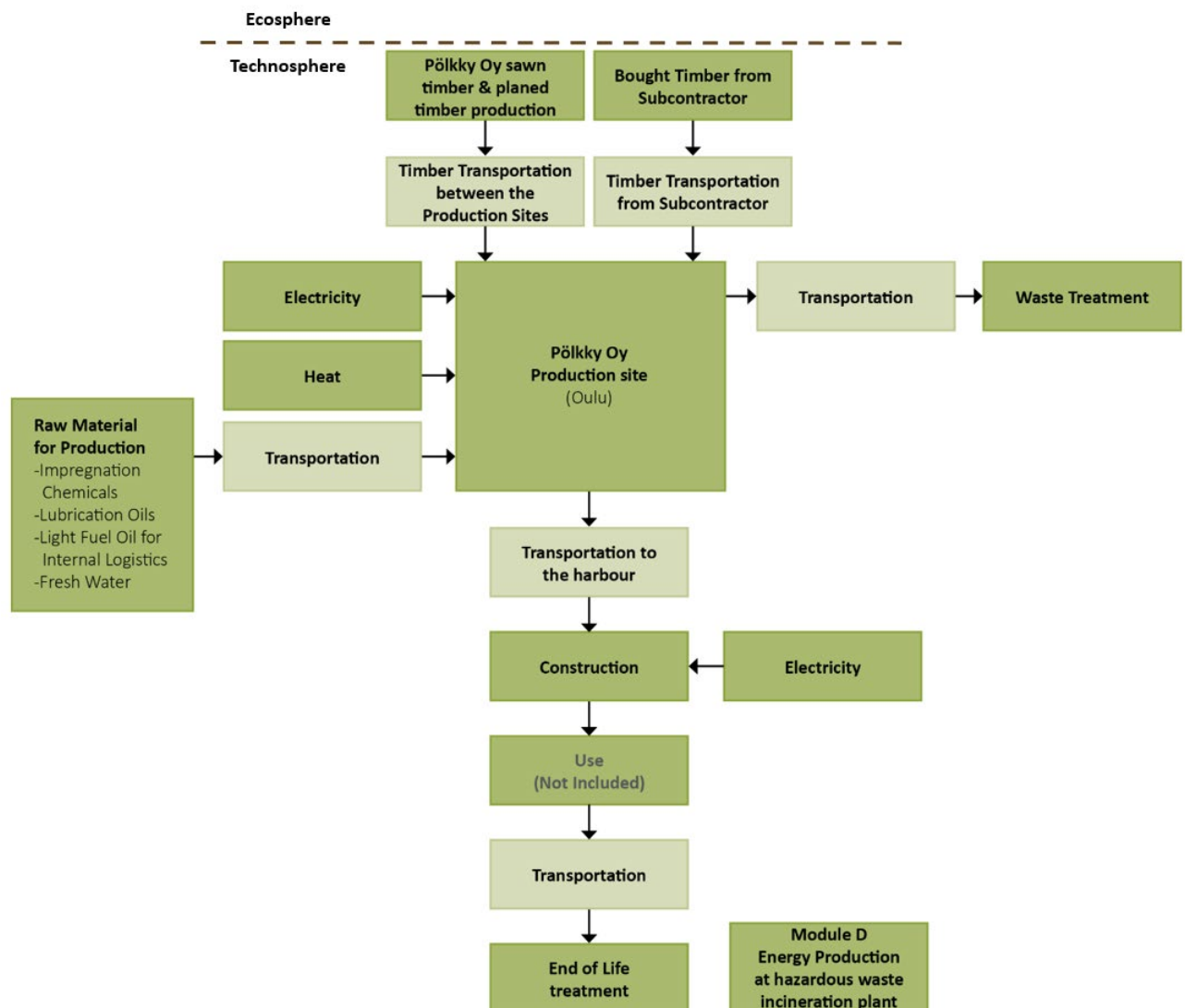


Figure 3. System boundaries of the EPD for impregnated timber

### 3.4 System boundary exclusions

The production of production equipment and means of transport, as well as the machinery, equipment and production goods needed for production and in production are excluded from the scope of the assessment, as are the commuting of workers.

The screws required for the installation are excluded from the model, as their quantity is small. Also, the plastic waste handling, which comes from unwrapping the plastic bands at the construction site, is excluded from the modelling as the amount of plastic waste from 1 m<sup>3</sup> timber package is small. The screws and the plastic represent less than 1% from the weight of the product. No other material or energy flows have been excluded from the system boundaries.

### 3.5 Allocation

In Pölkky Oy's impregnation plant in Oulu, only the impregnation process is carried out separately from other processes, eliminating the need for allocation. Impregnation process doesn't generate by-products either.

## 4 Indicators describing environmental impacts and use of natural resources

Environmental indicators are shown in the following tables. The results for the impregnated timber represent the outcomes from Pölkky Oy's Oulu's production facility when producing 1 m<sup>3</sup> of impregnated timber. The impregnated timber is only produced at one production facility, so the result comparison between different sites is not necessary.

### 4.1 Core environmental impacts per declared unit

Table 3. The core environmental impacts for impregnated timber.

Indicators	Unit	A1-A3	A4	A5	C1	C2	C3	C4	D
Climate change, total	kg CO <sub>2</sub> eq.	-5,12E+02	8,25E+00	1,48E-01	1,48E-01	1,61E+01	7,38E+02	1,09E-01	-2,93E+02
Climate change, fossil	kg CO <sub>2</sub> eq.	9,10E+01	8,21E+00	1,28E-01	1,28E-01	1,60E+01	7,71E+00	5,83E-02	-3,75E+02
Climate change, biogenic	kg CO <sub>2</sub> eq.	-6,04E+02	3,15E-02	1,84E-02	1,84E-02	3,82E-02	7,31E+02	5,09E-02	8,17E+01
Climate change, LU-LUC	kg CO <sub>2</sub> eq.	5,50E-01	4,91E-03	1,18E-03	1,18E-03	6,01E-03	1,20E-03	6,04E-05	4,83E-02
Ozone depletion	kg CFC-11 eq.	7,40E-06	1,79E-06	7,30E-09	7,30E-09	3,99E-06	6,63E-07	1,67E-08	-3,20E-06
Acidification	mol H <sup>+</sup> eq.	2,35E-01	2,36E-02	5,15E-04	5,15E-04	5,10E-02	8,37E-02	8,76E-04	-1,06E+00
Eutrophication aquatic freshwater	kg PO <sub>4</sub> eq.	2,17E-02	7,61E-04	4,15E-05	4,15E-05	1,04E-03	3,50E-03	3,98E-04	-3,27E-02
Eutrophication aquatic marine	kg N eq.	6,00E-02	4,38E-03	1,02E-04	1,02E-04	1,14E-02	4,29E-02	1,61E-04	-1,12E-01
Eutrophication terrestrial	mol N eq.	6,22E-01	4,75E-02	1,04E-03	1,04E-03	1,25E-01	4,14E-01	1,74E-03	-7,31E-01
Photochemical ozone formation	kg NMVOC eq.	1,96E-01	1,84E-02	2,78E-04	2,78E-04	4,92E-02	1,02E-01	5,41E-04	-3,31E-01
Depletion of abiotic resources - minerals & metals *	kg Sb eq.	1,52E-05	1,08E-07	9,60E-10	9,60E-10	1,19E-07	8,55E-06	1,17E-09	-3,88E-08

Depletion of abiotic resources - fossil fuels *	MJ, net calorific value	1,06E+03	1,19E+02	1,70E+00	1,70E+00	2,53E+02	7,38E+01	1,30E+00	-4,99E+03
Water use *	m <sup>3</sup> world eq. Deprived	4,70E+00	3,89E-02	6,77E-03	6,77E-03	6,70E-02	-1,97E-01	2,71E-03	-8,89E+00

\* The results of this environmental impact indicator shall be used with care as the uncertainties on these results are high or as there is limited experienced with the indicator

## 4.2 Additional environmental impacts per declared unit

Table 4. The additional environmental indicators for impregnated timber.

Indicators	Unit	A1-A3	A4	A5	C1	C2	C3	C4	D
Particulate Matter emissions	Disease incidence	2,49E-06	3,84E-07	2,69E-09	2,69E-09	1,40E-06	8,65E-07	9,16E-09	-8,18E-07
Ionizing radiation, human health **	kBq U235 eq.	9,38E+00	6,82E-01	1,90E-01	1,90E-01	1,32E+00	1,76E-01	7,24E-03	2,61E+00
Eco-toxicity (freshwater) *	CTUe	4,49E+02	1,08E+02	2,04E+00	2,04E+00	2,04E+02	1,27E+02	1,06E+01	-1,32E+03
Human toxicity, cancer effects *	CTUh	1,76E-08	4,28E-09	4,38E-11	4,38E-11	5,34E-09	1,45E-06	7,46E-11	5,65E-09
Human toxicity, non-cancer effects *	CTUh	4,56E-07	9,10E-08	6,83E-10	6,83E-10	2,04E-07	6,98E-07	9,51E-10	1,37E-07
Land use related impacts/Soils quality *	Dimensionless	4,15E+04	4,09E+01	1,03E+00	1,03E+00	2,42E+02	9,23E+00	2,28E+00	-4,66E+03

\* The results of this environmental impact indicator shall be used with care as the uncertainties on these results are high or as there is limited experience with the indicator.

\*\* This impact category deals mainly with the eventual impact of low dose ionizing radiation on human health of the nuclear fuel cycle. It does not consider effects due to possible nuclear accidents, occupational exposure nor due to radioactive waste disposal in underground facilities. Potential ionizing radiation from the soil, from radon and from some construction materials is also not measured by this indicator.

### 4.3 Indicators describing the use of natural resources

Table 5. Use of Resources for impregnated timber

	A1-A3	A4	A5	C1	C2	C3	C4	D
Use of renewable primary energy excluding renewable primary energy resources used as raw materials [MJ/unit]	1,98E+03	1,67E+00	9,36E-01	9,36E-01	1,90E+01	0,00E+00	0,00E+00	5,88E+03
Renewable primary energy resources used as raw materials [MJ/unit]	5,88E+03	0,00E+00	0,00E+00	0,00E+00	0,00E+00	-5,88E+03	0,00E+00	0,00E+00
Total use of renewable primary energy resources [MJ/unit]	7,86E+03	1,67E+00	9,36E-01	9,36E-01	1,90E+01	-5,88E+03	0,00E+00	5,88E+03
Use of non-renewable primary energy excluding non-renewable primary energy resources used as raw materials [MJ/unit]	1,02E+04	3,55E+01	9,54E-02	9,54E-02	9,99E+01	0,00E+00	0,00E+00	0,00E+00
Non-renewable primary energy resources used as raw materials [MJ/unit]	0,00E+00	0,00E+00	0,00E+00	0,00E+00	0,00E+00	0,00E+00	0,00E+00	0,00E+00
Total use of non-renewable primary energy resources [MJ/unit]	1,02E+04	3,55E+01	9,54E-02	9,54E-02	9,99E+01	0,00E+00	0,00E+00	0,00E+00
Used recycled raw materials [kg/unit]	0,00E+00	0,00E+00	0,00E+00	0,00E+00	0,00E+00	0,00E+00	0,00E+00	0,00E+00
Use of renewable secondary fuels [MJ/unit]	0,00E+00	0,00E+00	0,00E+00	0,00E+00	0,00E+00	0,00E+00	0,00E+00	0,00E+00
Use of non-renewable secondary fuels [MJ/unit]	0,00E+00	0,00E+00	0,00E+00	0,00E+00	0,00E+00	0,00E+00	0,00E+00	0,00E+00
Total use of water [m³]	1,77E-01	0,00E+00	0,00E+00	0,00E+00	0,00E+00	0,00E+00	0,00E+00	0,00E+00

## 5 Other environmental indicators

### 5.1 Biogenic carbon content per declared unit

Table 6. Biogenic carbon content

Biogenic carbon content in product	A3
Impregnated timber*	202,1 C/m³
Biogenic carbon content in packaging	0 C / m³

The average density of the impregnated timber is 490 kg/m³. It is estimated that 1 % of the product is impregnation chemicals. Therefore, the dry mass of the product is 404,3 kg/m³. Biogenic carbon constitutes approximately 50% of the dry weight of wood.

The amount of biogenic carbon stored in the product differs from the reported GWP-biogenic value due to biogenic CO<sub>2</sub> emissions emitted during bio-based fuel combustion used in heat production process. These emissions are included in the GWP-biogenic category in accordance with EN 15804+A2.

## 5.2 Amount of wastes

Table 7. Wastes – impregnated timber

Waste categories	Unit	A1-A3	A4	A5	C1	C2	C3	C4	D
Hazardous waste disposed	kg	1,33E-01	0,00E+00	0,00E+00	5,00E-01	0,00E+00	0,00E+00	0,00E+00	0,00E+00
Non-hazardous waste disposed	kg	4,69E+00	0,00E+00	1,58E-01	0,00E+00	0,00E+00	0,00E+00	0,00E+00	0,00E+00
Radioactive waste disposed	kg	0,00E+00	0,00E+00	0,00E+00	0,00E+00	0,00E+00	0,00E+00	0,00E+00	0,00E+00

## 5.3 Other environmental indicators

Table 8. Other environmental indicators – impregnated timber

Other environmental indicators	Unit	A1-A3	A4	A5	C1	C2	C3	C4	D
Components for reuse	kg	0,00E+00	0,00E+00	0,00E+00	0,00E+00	0,00E+00	0,00E+00	0,00E+00	0,00E+00
Materials for recycling	kg	4,08E+00	0,00E+00	1,58E-01	0,00E+00	0,00E+00	0,00E+00	0,00E+00	0,00E+00
Materials for energy recovery	kg	0,00E+00	0,00E+00	0,00E+00	0,00E+00	0,00E+00	0,00E+00	0,00E+00	0,00E+00
Exported energy - Heat	MJ	7,45E+00	0,00E+00	0,00E+00	0,00E+00	0,00E+00	5,88E+03	0,00E+00	0,00E+00
Exported energy - Electricity	MJ	0,00E+00	0,00E+00	0,00E+00	0,00E+00	0,00E+00	0,00E+00	0,00E+00	0,00E+00

# 6 Scenarios and additional technical information

## 6.1 Energy in manufacturing phase

Environmental impacts from the heating were modelled based on Tilastokeskus fuel classification report and actual fuel mix used at the heat plant. In Oulu the heat is produced 46 % by biofuels and the rest is peat (19%), oil (2%), REF (4,5%) and energy recovery (29%). The GWP-factor for heating is shown in the table below.

Table 9. Information about energy used in the manufacturing phase

<b>Electricity data source</b>	Ecoinvent database, version 3.8; electricity, high voltage, Residual mix, FI, 2014-01-01 - 2021-12-31
<b>GWP per 1 kWh electricity</b>	0.74 kg CO <sub>2</sub> -Eq
<b>District heating data source</b>	Modelled based on Tilastokeskus (2024) report and actual fuel mix used at the plants.
<b>GWP per 1 kWh energy</b>	Oulu 0,263 kg CO <sub>2</sub> -Eq



## 6.2 Transportations to the construction site A4

Table 10. Technical information about the transportations in the A4 for impregnated timber

Scenario information	Quantity	Data source
Full trailer, diesel	0.0101 kg diesel/tkm	Ecoinvent database 3.8: Transport, freight, lorry 3.5-7.5 metric ton, EURO6
Specific transport emissions	0.512 kg CO <sub>2</sub> -Eq /tkm	Ecoinvent database 3.8: Transport, freight, lorry 3.5-7.5 metric ton, EURO6
Average distance	50 km/full trailer,	
Capacity utilization % (total)	76 %	Ahlskog, R. 2017
Bulk density of transported products kg/m <sup>3</sup>	490 kg/m <sup>3</sup>	

## 6.3 Additional technical information in the end-of-life phase

Table 11. Additional information about the end-of-life process

Collection processes	1 kg collected separately
Recovery system for impregnated timber	0 kg for reuse 0 kg for recycling 1.0 kg for energy recovery
Disposal	0 kg for final disposal
Assumptions for scenario development, e.g. transportation	Transportation distance to waste treatment plant in the end-of-life phase 510 km with full trailer (76 %).

## 7 References

- Ahlskog, R. 2017. Digitalisaatio mullistaa logistiikan. Kuljetus & Logistiikka 5, 44
- Ecoinvent database. Version 3.8. Allocation, cut-off by classification.
- EN15804:2019 Sustainability of construction works. Environmental Product Declarations. Core rules for the product category of construction products
- Finnish Sawmills Association. EPD of Finnish sawn and planed timber. 10.06.2021.
- RTS 2020. RTS PCR. Protocol for drawing up Environmental Product Declarations of building products (RTS EPD) Complies with the standard SFS-EN15804:2019. 26.08.2020.
- RTS 2021. The Finnish RTS EPD programme RTS EPD Guideline.
- ISO 14025:2011-10 Environmental labels and declarations. Type III environmental declarations. Principles and procedures
- ISO14040:2006. Environmental management – Life cycle assessment – Principles and framework
- ISO 14044:2006. Environmental management -- Life cycle assessment -- Requirements and guidelines

## Attachments

ATTACHMENT I: FSC Certificate - SCS-COC-008223

ATTACHMENT II: PEFC Certificate - FIN-PEFC-COC-1523

*SCS Global Services does hereby certify that an independent audit has been completed and conformity to the applicable standard(s) has been confirmed for:*

# Pölkky Oy

Kemijärventie 73, Kuusamo, 93600, Finland

**This multi-site certificate covers the procurement, production and distribution of sawn timber, planed and impregnated timber, gluelam timber and side products using the credit system. It also covers a DDS for the control of wood sourced from the municipalities in Northern Finland. It also covers the sale of FSC Controlled Wood.**

The facility(s) are hereby Chain of Custody certified to sell products as:

## FSC Controlled Wood; FSC Mix

The assessment has been conducted by SCS Global Services in accordance with the protocols of the Forest Stewardship Council® A.C. (FSC®).

FSC Standard: FSC-STD-40-003; FSC-STD-40-004; FSC-STD-40-005

Certificate Code: SCS-COC-008223

Trademark License Code: FSC-C163097

CW Code: SCS-CW-008223

Valid from: 24 February 2021    Expiry date: 23 February 2026

This certificate itself does not constitute evidence that a particular product supplied by the certificate holder is FSC-certified (or FSC Controlled Wood where applicable). Products offered, shipped or sold by the certificate holder can only be considered covered by the scope of this certificate when the required FSC claim is clearly stated on sales and delivery documents. The scope of this certificate is considered accurate on the date of issuance. The current validity and scope, including the full list of products, shall be verified on <http://info.fsc.org>. The certificate shall remain the property of SCS, and this certificate and all copies or reproductions of this certificate shall be returned to SCS immediately upon request. Where a certificate covers more than one site, the covered products and processes/ activities are performed by the network of Participating Sites, and not necessarily by each of them.



**The mark of  
responsible forestry**



A handwritten signature in black ink, appearing to read 'M. Schwartz'.

Maggie Schwartz, Vice President, Program Development  
SCS Global Services  
2000 Powell Street, Ste. 600, Emeryville, CA 94608 USA

# Pölkky Oy

This addendum contains the additionally certified locations approved by Pölkky Oy to participate in the use of the FSC® Chain of Custody Certification.

Certificate Number: (SCS-COC-008223)

## Additional Locations

Pölkky Oy Metsä: Kemijärventie 73, Kuusamo, 93600, (SCS-COC-008223-B)

Pölkky Oy Kajaani: Tehdaskatu 15, Kajaani, 87100, (SCS-COC-008223-C)

Pölkky Oy Kitka: Tolvantie 41, Kuusamo, 93900, (SCS-COC-008223-D)

Pölkky Oy Taivalkoski: Raamitie 1, Taivalkoski, 93400, (SCS-COC-008223-E)

Pölkky Oy Oulu: Moreenitie 17, Oulu, 90620, (SCS-COC-008223-F)



# PEFC CERTIFICATE

**Finotrol / Control Union Finland Oy herewith declares that**

**Pölkky Oy**

Kemijärventie 73  
FI-93600 Kuusamo

Including:

Pölkky Oy Metsä  
Pölkky Oy Kajaani  
Pölkky Oy Kitka  
Pölkky Oy Taivalkoski  
Pölkky Oy Oulu

managed Chain of Custody system complies with the international PEFC standards:

**PEFC ST 2002:2020 and PEFC ST 2001:2020** requirements in the following product categories:


**010100 Sawlogs and veneer logs, 010200 Pulpwood, 010300 Chips and Particles, 020100 Fuelwood, 030100 Sawnwood, 040200 Finger jointed lumber, 040300 Glue Laminated Products, 030300 Impregnated wood, 090200 Integrated Parts of Wooden Buildings and Constructions.**

The Chain of custody method used by the organization is **percentage method and credit method**.

**This certificate was first issued on February 15, 2019, and it is updated  
June 2<sup>nd</sup> 2025, and is valid until November 27<sup>th</sup> 2028.**

Certificate number: **FIN-PEFC-COC-1523**

On behalf of Control Union Finland Oy (Finotrol), accredited certification body S038, 2<sup>nd</sup> of June.



Timo Aavakallio  
Quality manager



**Control Union Finland Oy (Finotrol)**

**OFFICE** • Teollisuuskatu 3 - 5 • FI-50130 Mikkeli  
• Finland • **NB** CPR/2412 • **W** [www.finotrol.fi](http://www.finotrol.fi)



## Appendix of wood species. Certificate: FIN-PEFC-COC-1523

PEFC Product Group	Wood Species	PEFC- method
010100 Sawlogs and Veneer Logs	Pine ( <i>Pinus sylvestris</i> ) Spruce ( <i>Picea abies</i> ) Larch ( <i>Larix decidua</i> ) Birch ( <i>Betula pubescens</i> , <i>Betula pendula</i> ) Aspen ( <i>Populus tremula</i> )	Percentage method
010200 Pulpwood	Pine ( <i>Pinus sylvestris</i> ) Spruce ( <i>Picea abies</i> ) Larch ( <i>Larix decidua</i> ) Birch ( <i>Betula pubescens</i> , <i>Betula pendula</i> ) Aspen ( <i>Populus tremula</i> )	Percentage method
010300 Chips and Particles	Pine ( <i>Pinus sylvestris</i> ) Spruce ( <i>Picea abies</i> )	Percentage method
020100 Fuelwood	Pine ( <i>Pinus sylvestris</i> ) Spruce ( <i>Picea abies</i> ) Larch ( <i>Larix decidua</i> ) Birch ( <i>Betula pubescens</i> , <i>Betula pendula</i> ) Aspen ( <i>Populus tremula</i> ) Alder ( <i>Alnus incana</i> , <i>Alnus glutinosa</i> )	Percentage method
030100 Sawn Timber	Pine ( <i>Pinus sylvestris</i> ) Spruce ( <i>Picea abies</i> )	Credit method
040200 Finger Jointed Lumber	Pine ( <i>Pinus sylvestris</i> ) Spruce ( <i>Picea abies</i> )	Credit method
040300 Glue Laminated Products	Pine ( <i>Pinus sylvestris</i> ) Spruce ( <i>Picea abies</i> )	Credit method
030300 Impregnated or treated wood	Pine ( <i>Pinus sylvestris</i> )	Credit method
090200 Integrated Parts of Wooden Buildings and Construction	Pine ( <i>Pinus sylvestris</i> ) Spruce ( <i>Picea abies</i> )	Credit method